

7 Nuthatch Apartments 16 Shearwater Drive, London, NW9 7QB  
£1,750





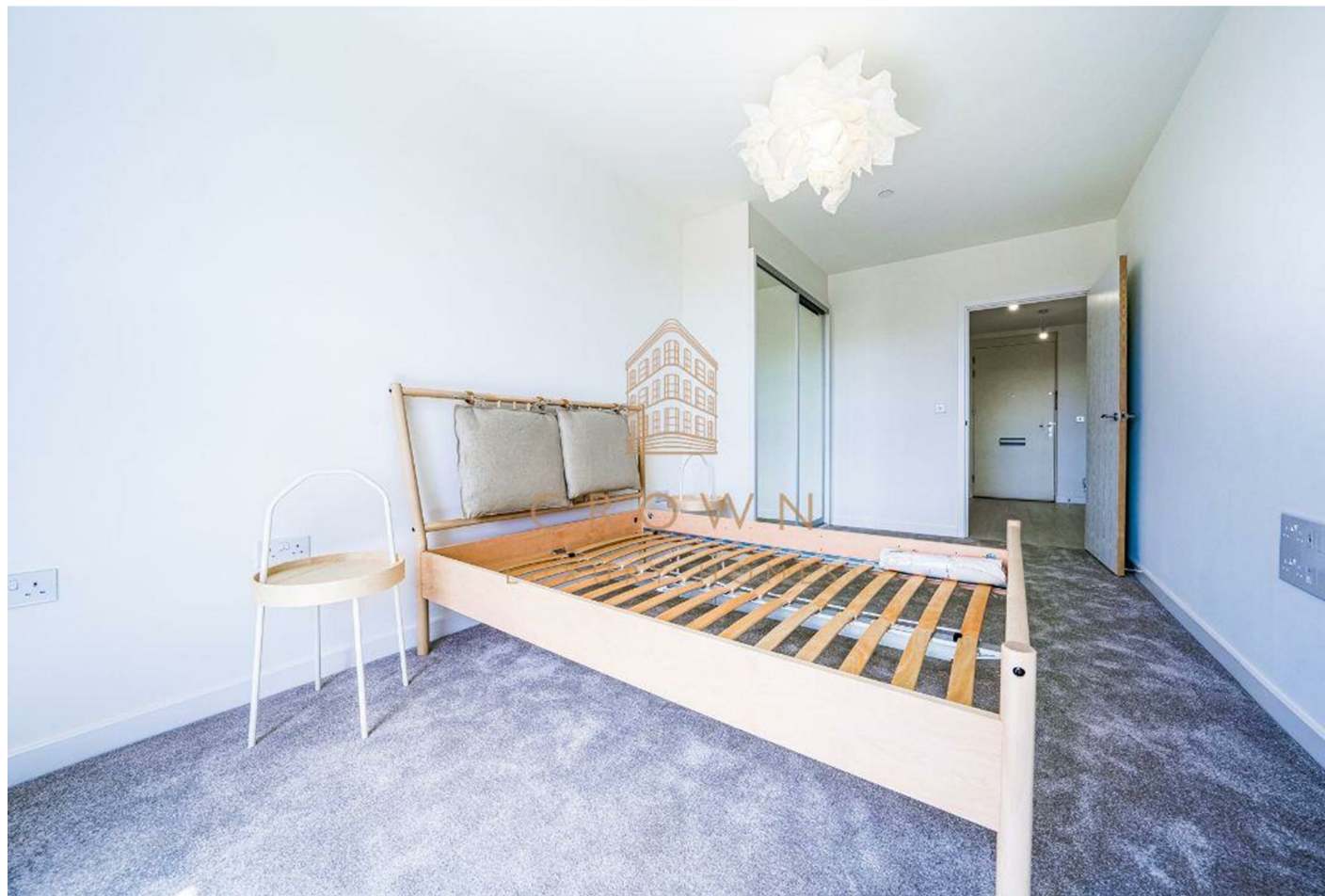
7 Nuthatch Apartments 16 Shearwater Drive, London, NW9 7QB

£1,750

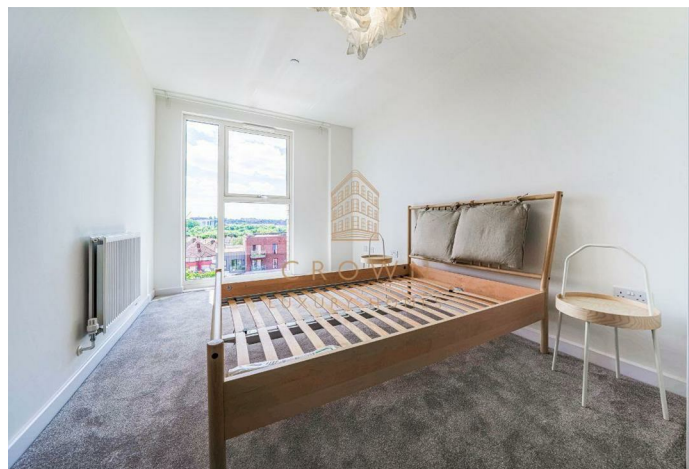
A brand new one-bedroom apartment in the brand new Hendon Waterside Development.



## Description



## Situation



Furnished

Council Tax Band: New Build

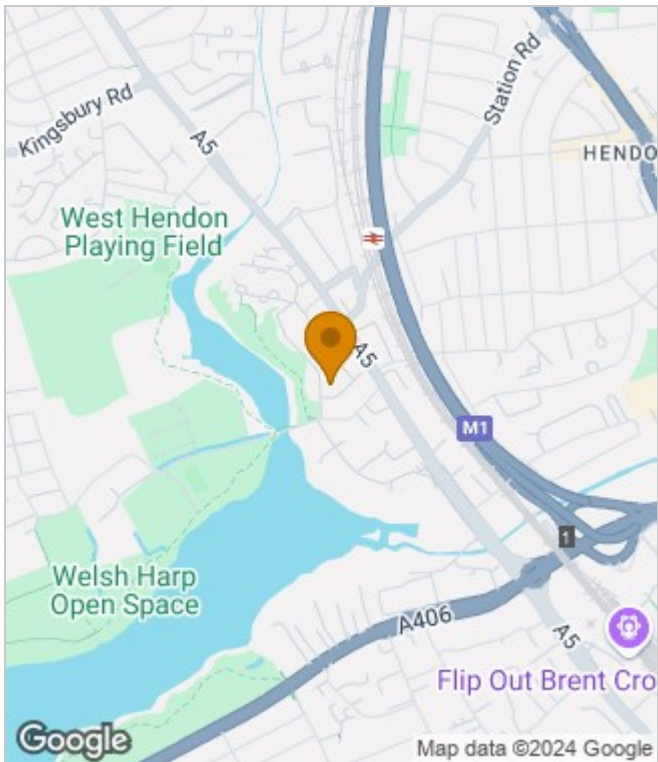
Available: 8th October 2024




## Floor Plans



## Area Map



## Energy Performance Graph

Energy Efficiency Rating		Current	Potential
<p><i>Very energy efficient - lower running costs</i></p> <p>(92 plus) <b>A</b></p> <p>(81-91) <b>B</b></p> <p>(69-80) <b>C</b></p> <p>(55-68) <b>D</b></p> <p>(39-54) <b>E</b></p> <p>(21-38) <b>F</b></p> <p>(1-20) <b>G</b></p> <p><i>Not energy efficient - higher running costs</i></p>			
<b>England &amp; Wales</b>		EU Directive 2002/91/EC	

These particulars, whilst believed to be accurate are set out as a general outline only for guidance and do not constitute any part of an offer or contract. Intending purchasers should not rely on them as statements of representation of fact, but must satisfy themselves by inspection or otherwise as to their accuracy. No person in this firm's employment has the authority to make or give any representation or warranty in respect of the property.

199 Bishopsgate, London, EC2M 3TY  
Tel: +44 2035 143482 Email: [lettings@crownluxuryhomes.com](mailto:lettings@crownluxuryhomes.com) <https://www.crownluxuryhomes.com/>